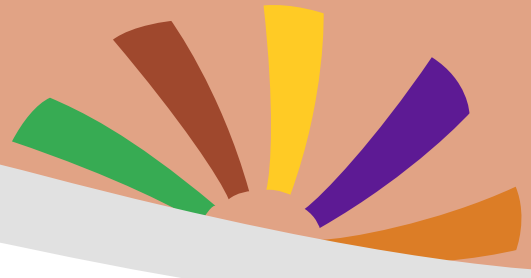


Together We Grow



Infant & Toddler Schedule of Care

The following schedule is a guide for daily infant & toddler care. It is adjusted according to each child's individual development needs. Staff repeat activities in 2-3 hour increments.

- ⇒ **Diaper Change/Check**
- ⇒ **Gross Motor Development**
- ⇒ **Tummy Time & Muscle Movement Exercises**
- ⇒ **Bottle/Feeding (as directed by parents)**
- ⇒ **Reading & Age-appropriate Play**
- ⇒ **Nap time**

TWG Staff LOVE to hear the sound of our voices! We enjoy talking to little ones constantly throughout the day. Whether we are changing a diaper, feeding, preparing for nap, or simply enjoying a bouncy walk around the home, staff make sure to give little ones lots of positive verbal stimulation!

In addition, infants & toddlers are included as much as possible in the daily activities of their older peers. For example, the little ones may be included in circle time and lesson plans for preschool learners, as observers of what's to come! This shared time allows an opportunity for infants & toddlers to observe and identify with other little people voices and sounds; and pick up on language, body movements and other physical behaviors they will soon enjoy themselves.